

LTC208 Hydraulic Travel Drive Double Drum ROAD ROLLER

ENGINE MODEL CUMMINS4BT3.9 ENGINE
 GROSS POWER 75kW @ 2400rpm
 OPERATING WEIGHT 8000kg

LTC208 Tandem Drum Roller



Features overview



CUMMINS Engine with superior Reliability, performance and low fuel consumption. provides professional service more than 190 countries.

LTC208 Hydraulic vibratory rollers are manufactured according to international advanced technology and by use of imported components from abroad.

The machine is a double drum tandem vibratory roller. It is Primarily used for the compaction of road bituminous course, sand gravel mixtures and RCC material,

Being a universal compaction equipment for highway, municipal road, park area and industry ground etc.

Main Characteristic:

- 1, Full hydraulic two-wheel drive and vibration. Double frequency double vibration system.
- 2, Reliable CUMMINS diesel engine for convenient operation and maintenance.
- 3, Hydrostatic center articulated steering, Optional patented crab mechanism.
- 4, Cabin with air conditioner, comfortable and spacious, the flexible steering seat facilitate the operation.
- 5, The driver's cabin can be turned on one side as a whole, to facilitate maintenance.
- 6, For-type frame, good hold-down property.
- 7, Hydraulic pump and vibrating motors are of the products made by American manufacturer DANFOSS.

Main Technical parameters

Model	LTC208
Operating mass	8000kg
Font axle load	4000kg
Rear axle load	4000kg
Static linear load	231N/cm
Form of frame	fork-type
Type of water spray	pressure
Water tank capacity	400x2 L
Fuel tank capacity	80 L
Hydraulic oil tank capacity	65 L
Vibration amplitude	0.67(High)/0.34(Low)mm
Vibration frequency	45(high)/50(low)Hz
Centrifugal force	90x2(high)/69x2(low)Kn
Travel Speed	0-10Km/h
Steering angle	±30°
Electrical voltage	24V
Grade ability	40%
Turning radius	6000mm
Overall dimension (LxWxH)	4558x1840x2674mm
Vibration drum diameter	1150mm
Drum width	1730mm
Wheel base	3217mm
Diesel engine power	75Kw/2400rpm
Diesel engine model	CUMMINS4BT3.9
Ship	1 unit/40HQ 3units/2x40HQ

Optional: Edge cutter, Canopy.





The cab dashboard, seat and control box are arranged in combination with ergonomics for comfortable operation;



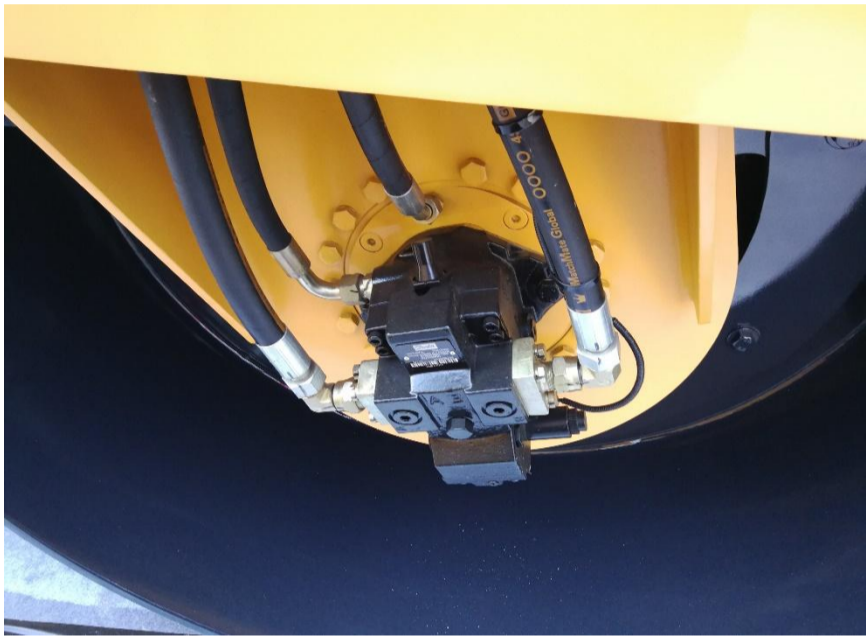
The ergonomic cab features large space and excellent visual field.
Top-mounted air conditioner as optional; Comfortable footsteps,



High-end seats, has greatly enhanced operator comfort, reduce fatigue. driving platform can rotate 180° Reciprocating operation is convenient and comfortable. Reciprocating operation is convenient and comfortable. Reciprocating operation is convenient and comfortable.



The joystick incorporates the gearshift and vibration start/stop functions to realize simpler operations.



With double frequencies, double amplitudes, imported plunger DANFOSS pumps and motors

Our products will continue to improve with the progress of technology, and the differences between the parameters and structural characteristics listed in the sample and the real object shall prevail

Address: Airport Industrial Zone Luoyang city, Henan, China.
Tell: +86-13592012823 (Whatsapp, Wechat)
Email: johnbanlyt@aliyun.com
Web: www.